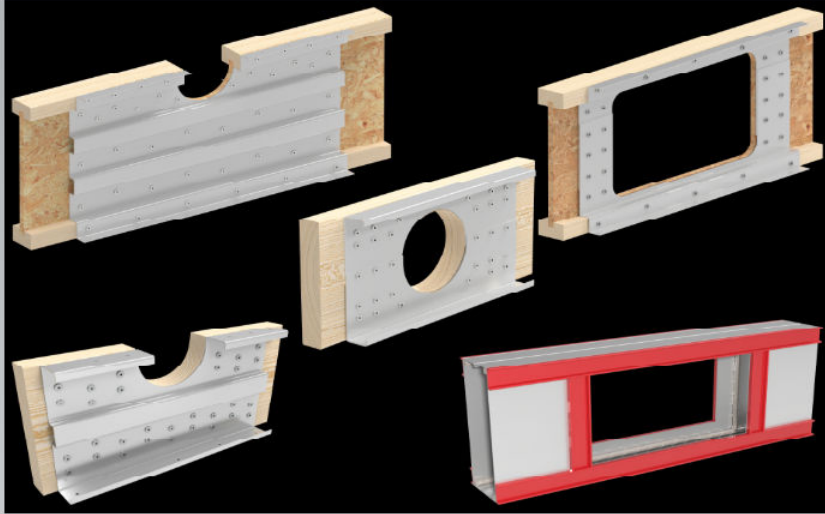


# Reinforcer Technologies



## Run Utilities Right Through Conventional Floor Joists

Metwood Joist Reinforcers are engineered light gauge steel attachments for engineered I-Joists or conventional framing. By allowing larger openings in Floor Joists, the Joist Reinforcer simplifies the routing and installation of utilities.

### Strength

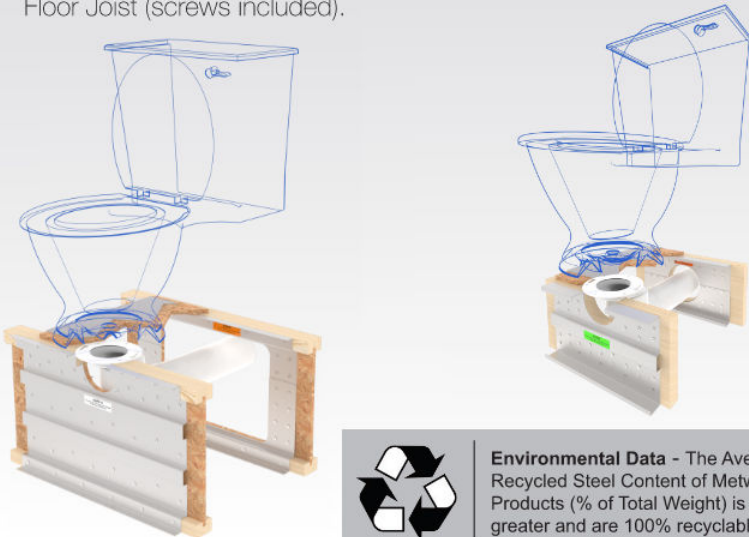
Metwood Joist Reinforcers restore the strength of Floor Joists weakened by the placement of large holes or cut-outs.

### Simplifies Construction

Allows utilities to be placed through the floor system rather than routing them below and decreasing ceiling height. Eliminates the need for bulkheads, chases and special engineering.

### Easy Installation

Metwood Joist Reinforcers are simply glued and screwed to the side of the Floor Joist (screws included).



**Environmental Data** - The Average Recycled Steel Content of Metwood Products (% of Total Weight) is 70% or greater and are 100% recyclable.



Reinforcer™  
Technologies

by Metwood

BEST OF IBS™  
AWARDS 2020

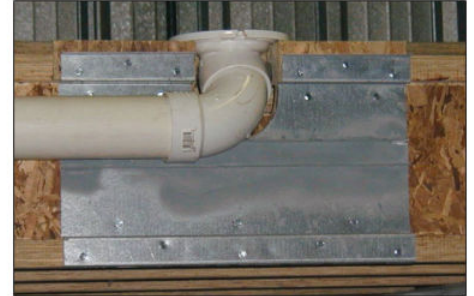
WINNER  
MOST INNOVATIVE  
BUILDING MATERIAL



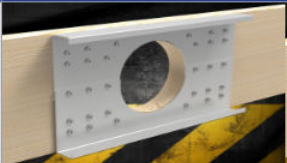




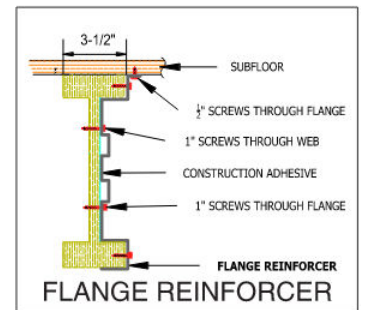
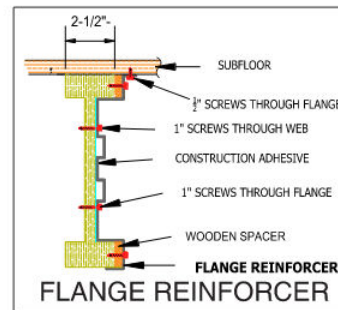
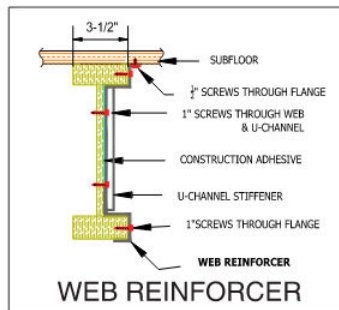
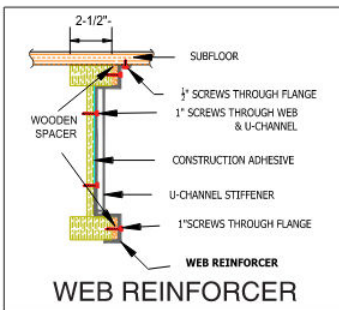
819 Naff Road.  
Boones Mill, VA. 24065  
Ph: 540-334-4294  
Tf: 866METWOOD  
Fx: 540-334-4293

[www.metwood.com](http://www.metwood.com)

# Reinforcer Technologies



I-Joist Flange Reinforcer		I-Joist Web Reinforcer		Hole Reinforcer		Notch Reinforcer		Beam Reinforcer	
									
Joist Depth	Notch Size	Joist Depth	Hole Size	Size	Hole Size	Size	Notch Size	Size	Opening Size
9-1/2"	3-1/4"H x 5"W	9-1/2"	5-1/2"H x 12"W	2" x 8"	4"	2" x 10"	3-1/2"H x 5"W		Opening sizes and locations are determined by load and span on a per project basis
11-7/8"	4"H x 5"W	11-7/8"	7-7/8"H x 12"W	2" x 10"	6"				
14"	4"H x 5"W	14"	10"H x 16"W	2" x 12"	6"				
16"	4"H x 5"W	16"	12"H x 16"W						



**Environmental Data** - The Average Recycled Steel Content of Metwood Products (% of Total Weight) is 70% or greater and are 100% recyclable.



819 Naff Road. Boones Mill, VA. 24065  
Ph: 540-334-4294 Tf: 866METWOOD Fx: 540-334-4293  
[www.metwood.com](http://www.metwood.com)

**2810HR Joist Reinforcer**

**CODE  
COMPLIANCE**



**Intertek**  
CCRR-0279