

Trimnable Cold Formed Steel Square Columns



SQUARE COLUMNS™

Field Trimnable

by **METWOOD**

Metwood SQUARE COLUMNS™ are a perfect match for TUFF BEAM™, but the fact is they'll support just about anything. SQUARE COLUMNS™ have many advantages over round columns.

Metwood SQUARE COLUMNS™ are used in both TUFF FLOOR™ and TUFF DECK™ products. SQUARE COLUMNS™ feature a higher strength to weight ratio, and offer a more convenient means of attaching finish materials at a price comparable to round columns. They can be cut to length on the job site and easily assembled using self drilling screws.

- Design Flexibility
- Can be cut on the job site
- No welding required
- Non-combustible
- Commercial and Residential
- Utilized for Shoring Alternative
- Green Building Product

Available Loads (lbs.)

| | |
|-------------|-------------------|
| 3" - 13 Ga. | 9' - 16,906 lbs. |
| 3" - 13 Ga. | 10' - 14,702 lbs. |
| 4" - 11 Ga. | 10' - 34,261 lbs. |
| 4" - 11 Ga. | 12' - 28,578 lbs. |



Environmental Data - The Average Recycled Steel Content of Metwood Products (% of Total Weight) is 70% or greater and are 100% recyclable.

819 Naff Road.
Boones Mill, VA. 24065
Ph: 540-334-4294
Tf: 866METWOOD
Fx: 540-334-4293

www.metwood.com

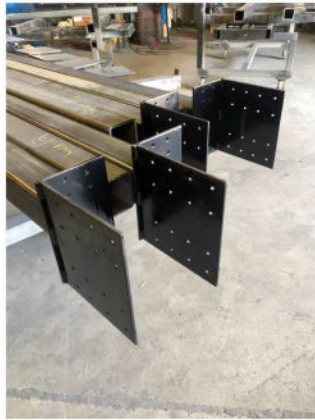
Square Columns™
The Complete Deck
System
by Metwood

Trimable Cold Formed Steel Square Columns

Simple Four Step Installation Process



Fabrication of Structural Columns, Plates, and Other Steel Products Available



Environmental Data - The Average Recycled Steel Content of Metwood Products (% of Total Weight) is 70% or greater and are 100% recyclable.

M

**METWOOD
BUILDING SOLUTIONS**

819 Naff Road. Boones Mill, VA. 24065
Ph: 540-334-4294 Tf: 866METWOOD Fx: 540-334-4293
www.metwood.com

