

CUSTOMER MEMO: MTWDeck Ledger Bracket

The Metwood MTWDeck Bracket can be utilized on structures with stone, masonry, continuous insulation, vinyl and more veneers as an alternate deck ledger connection. Section R507.2.2 of the IRC states, "Deck ledger connections not conforming to Table R507.2 shall be designed in accordance with accepted engineering practice." The MTWDeck Bracket has been designed in accordance with accepted engineering practice and has been evaluated and achieved a Code Compliance Research Report.



CODE
COMPLIANCE



Intertek
CCRR-0261

MTWDeck Bracket Maximum Spacing

Band of Structure Species	DECK JOIST SPAN LESS THAN OR EQUAL TO: (feet)						
	6	8	10	12	14	16	18
<i>Douglas Fir-Larch and Southern Pine</i>	8-0	8-0	6-0	5-0	5-0	4-0	3-0
<i>Spruce Pine Fir and Hem Fir</i>	8-0	6-0	5-0	4-0	3-0	3-0	3-0

- **Band of Structure:** The MTWDeck Bracket must be attached to a 2-inch (51 mm) nominal lumber band joist plus an additional 2" nominal lumber blocking that bear on a sill plate or wall plate. If the MTWDeck Bracket is attached to a 1-inch-thick engineered wood product, the 2" nominal lumber blocking is still required.
- **Flashing:** All MTWDeck Brackets and Ledgers shall be flashed to prevent water from contacting the house band joist.
- **Section R507:** All other connections and design of a wood-framed deck shall be in accordance with Section R507 of the IRC.

Building Solution – DECK LEDGER

CODE
COMPLIANCE

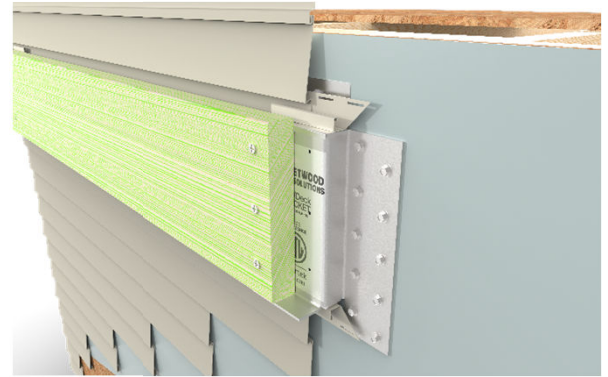


Intertek
CCRR-0261

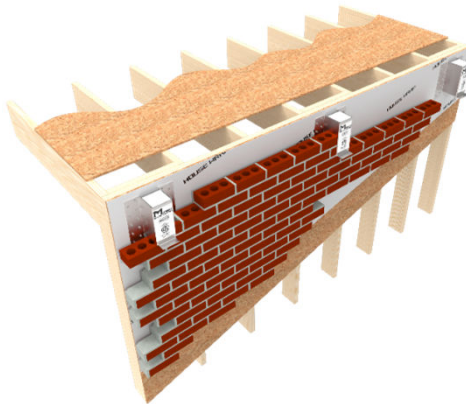
Utilize **METWOOD DECK LEDGER BRACKET** to Install a Deck Ledger on a Project With Masonry, Continuous Insulation, or Vinyl Veneer

*** All Fasteners for Wood Application Included*

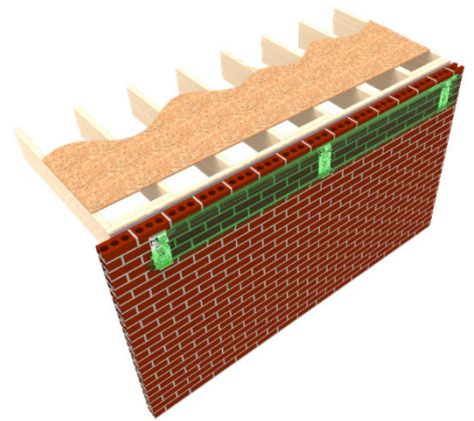
Now Available for Vinyl



Step 1 – Mount Deck Bracket To Double Blocking



Step 2 – Install veneer around MTWDeck Brackets



Step 3 – Attach Deck Ledger To Face of Brackets

Installation Instruction



The Metwood MTWDeck Bracket can be utilized on structures with brick, stone, or other veneers as an alternate deck ledger connection. The following steps demonstrate proper application of the MTWDeck Bracket.

Fastening					Allowable Design Loads ⁽⁴⁾			
Bracket to Wood Rim Joists ⁽¹⁾		Wood Deck Ledger to Bracket ⁽²⁾		Wood Members Specific Gravity ⁽³⁾	Wind Uplift C _D = 1.6	Vertical (Downward)		
Qty.	Type	Qty.	Type			Live Load C _D = 1.0	Snow Load C _D = 1.15	Construction Load C _D = 1.25
20	Simpson Strong-Tie, 1/4" x 3" Strong-Drive SDS screw (ICC-ES ESR-2236)	6	Type 7, 1/4-20 x 2-1/2" Dril-Flex Self-Drilling Structural Fastener (ICC-ES ESR-3332)	0.55	2,133 lbs	2,600 lbs	2,990 lbs	3,250 lbs

⁽¹⁾ Wood rim joists must consist of double blocked 2x members, with sufficient width to mount the MTWDeck Brackets.

⁽²⁾ Self-drilling screws must penetrate through the steel bracket, at the designated pre-drilled holes in the MTWDeck Bracket, with a minimum of three threads protruding past the wall thickness of the bracket.

⁽³⁾ Installation using wood members of lesser specific gravity may result in lower allowable design loads.

⁽⁴⁾ Allowable loads apply to connection of wood members with an installed or in-service moisture content of 19% or less, and wood members that will experience sustained exposure to elevated temperatures up to 100°F.

Step 1: Attach Bracket to Structure utilizing the (20) Fasteners in BAG #1. Space Brackets according to TABLE 1.

TABLE 1: MTWDeck Bracket Maximum Spacing

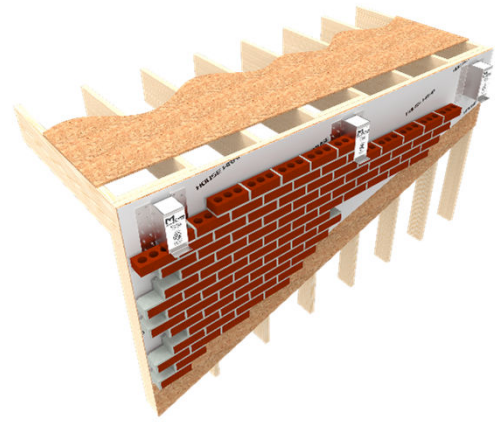
Band of Structure Species	DECK JOIST SPAN LESS THAN OR EQUAL TO: (feet)						
	6	8	10	12	14	16	18
Douglas Fir-Larch and Southern Pine	8-0	8-0	6-0	5-0	5-0	4-0	3-0
Spruce Pine Fir and Hem Fir	8-0	6-0	5-0	4-0	3-0	3-0	3-0



****Please note: The MTWDeck Bracket must be attached to a 2-inch nominal lumber band joist plus an additional 2" nominal lumber blocking that bear on a sill plate or wall plate. If the MTWDeck Bracket is attached to a 1-inch-thick engineered wood product, the 2" nominal blocking is still required.**

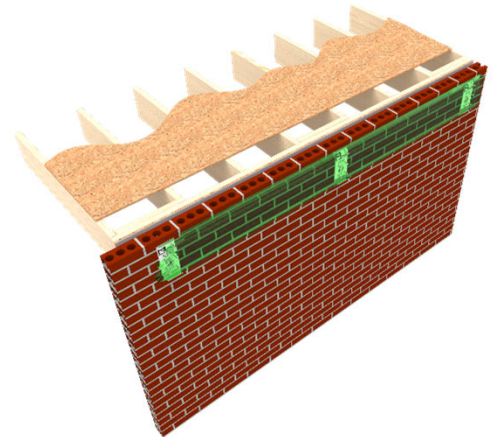
Step 2: Install brick, stone or other veneer around the MTWDeck Bracket.

****Please note that all MTWDeck Brackets and Ledgers shall be flashed according to code to prevent water from contacting the house band joist.**

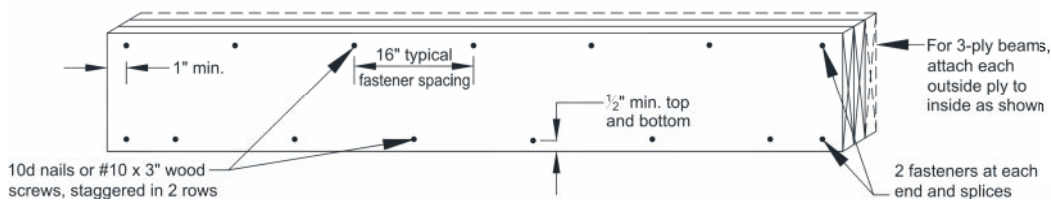
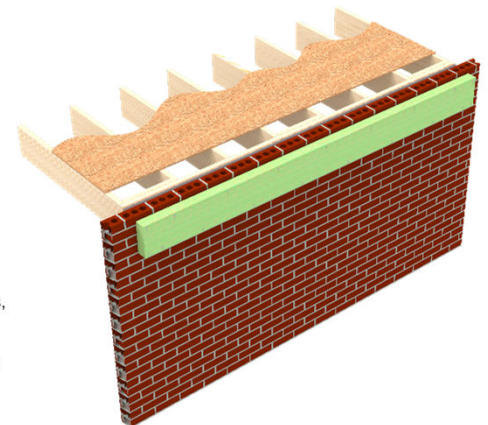


Step 3: Attach Deck Ledger to MTWDeck Bracket with the (6) Self Drilling Fasteners in BAG #2

****Please note that all other connections and design of a wood-framed deck shall be in accordance with Section R507 of the IRC.**



Step 4: Attach additional plies in accordance with Section 507.6 Deck Beams of the IRC.



**CODE
COMPLIANCE**



Intertek
CCRR-0261

For additional information visit
www.metwood.com or call (540) 334-4294